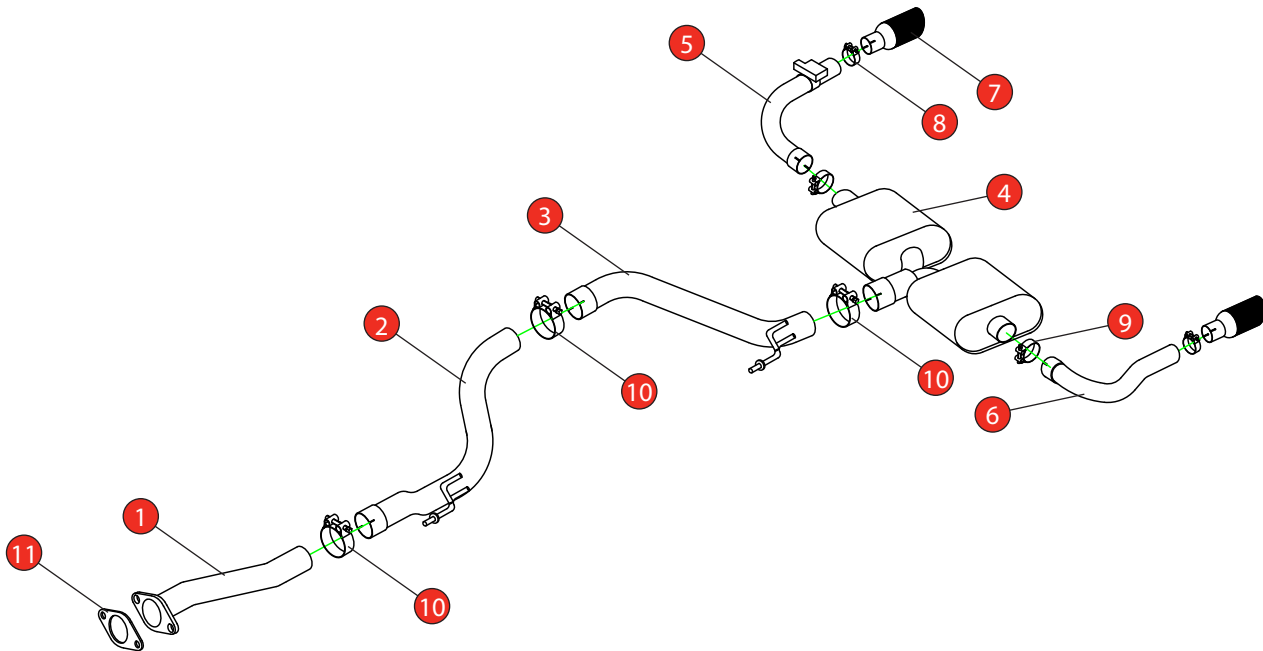


| | | | |
|--------------|---|-----------------|------------------------|
| Car | Hyundai i30 N Fastback GPF Model | Part No. | SHYS103CF |
| Year | 2019 - Current | Fit Kits | 327FK |
| Notes | Where not supplied use original fittings. | Features | Pipe Diameter:- 76.2mm |

Estimated Fitting Time: 60 Minutes



| NO. | PART NO. | DESCRIPTION | QTY |
|----------------|------------|------------------------------------|-----|
| 1 | 007HY | Front Pipe | 1 |
| 2 | 002HY | Centre Pipe | 1 |
| 3 | 003HY | Link Pipe | 1 |
| 4 | 008HY | Rear Silencer | 1 |
| 5 | 013HY | RH Trim Connecting Pipe with Valve | 1 |
| 6 | 014HY | LH Trim Connecting Pipe | 1 |
| 7 | Z023.10162 | 114mm Carbon Fibre Ascari Trim | 2 |
| Fit Kit | | | |
| 8 | Z016.10064 | 63-68mm H/D Clamp | 2 |
| 9 | Z016.10070 | 65mm Heavy Duty Clamp | 2 |
| 10 | Z016.10062 | 79mm Heavy Duty Clamp | 3 |
| 11 | Z033.10062 | Gasket | 1 |

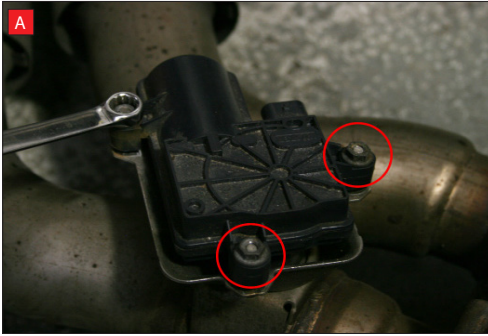
| | |
|------------|------------|
| E-MARK | N/A |
| DATE | 05/01/2023 |
| ISSUE | 01 |
| AUTHORISED | S Shipley |

NOTE: ENSURE SCORPION SYSTEM IS CLEAR OF MOVING PARTS AND ALL ORIGINAL FUNCTIONS WORK CORRECTLY.



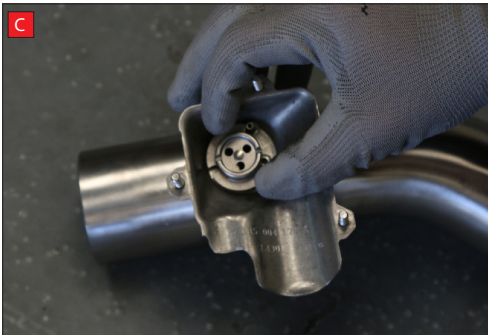
STAY CONNECTED TO RED POWER.

| | | | |
|-------|---|----------|------------------------|
| Car | Hyundai i30 N Fastback GPF Model | Part No. | SHYS103CF |
| Year | 2019-Current | Fit Kits | 327FK |
| Notes | Where not supplied use original fittings. | Features | Pipe Diameter:- 76.2mm |



A) After you have removed O.E exhaust you will need to swap the valve motor to the Scorpion exhaust. Remove the 3 nuts (keep them safe, as you will need them to bolt the electronic valve motor to your Scorpion Exhaust).

B) Lift up the motor. You will now be able to see the torsion spring (This must stay on the electronic valve motor to work with Scorpion Exhaust).



C) Rotate Scorpion valve so it aligns with the torsion spring.

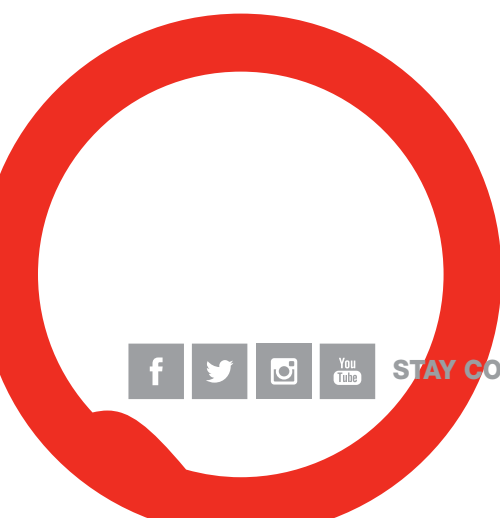
D) Now fit the O.E electronic valve motor ensuring the spring seats correctly to the lugs of the valve.

E) Using the 3 O.E nuts secure in place.



Once happy with fitment of Scorpion Exhaust, fully tighten up all clamps and fixing and plug in the electronic valve motors.

NOTE: ENSURE SCORPION SYSTEM IS CLEAR OF MOVING PARTS AND ALL ORIGINAL FUNCTIONS WORK CORRECTLY.



STAY CONNECTED TO RED POWER.